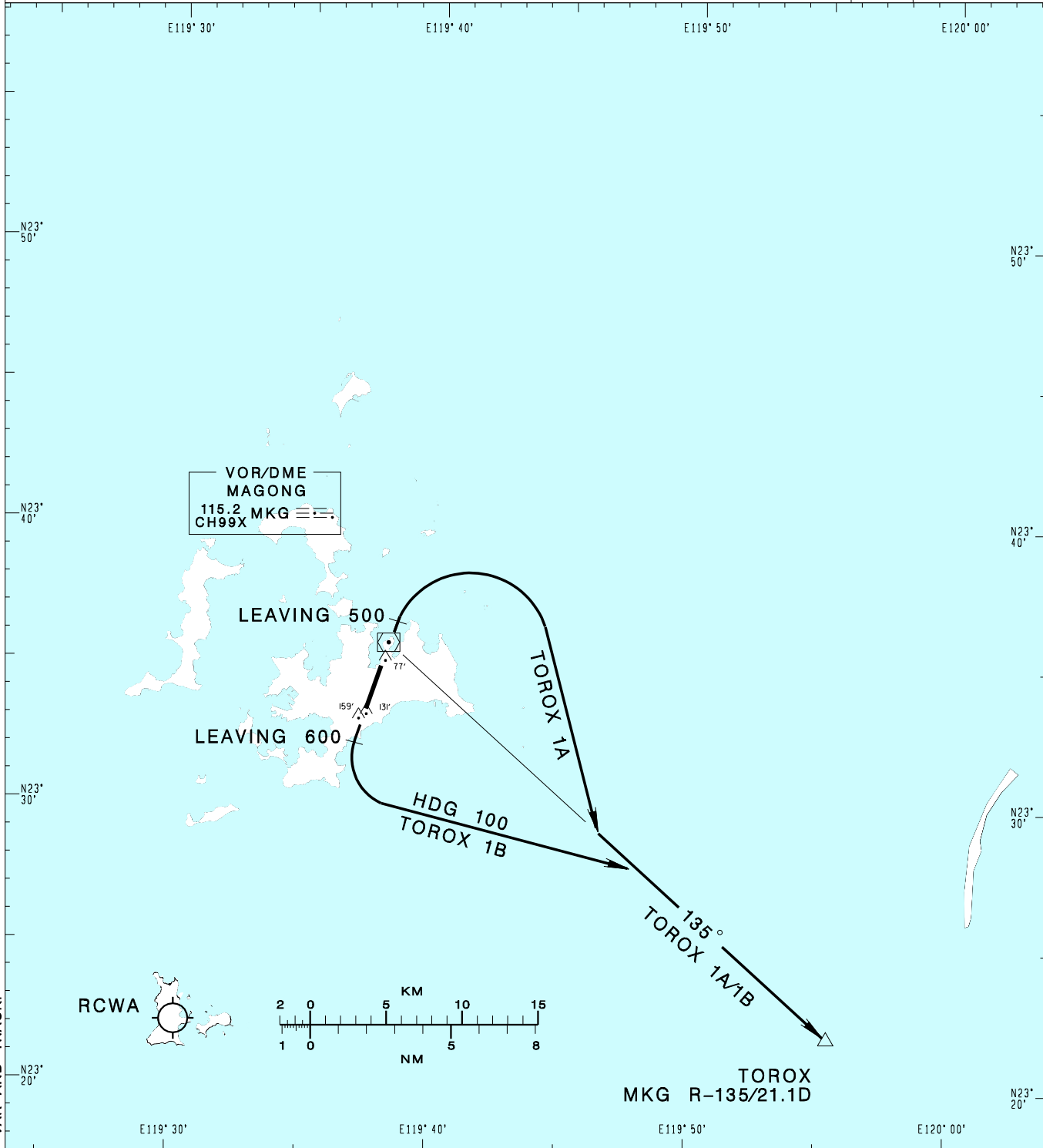


澎湖機場
PENGHU AD

RCQC SID
TOROX 1A(RWY02)
TOROX 1B(RWY20)

KAOHSIUNG APP 128.1 234.8	MAGONG TWR 118.3 236.6	ATIS 127.05	VAR 4° -2022 	 2000' MSA ARP 25NM
Apt Elev: 103'		Trans Level: FL130		
BEARINGS ARE MAGNETIC; DISTANCES ARE NAUTICAL MILES; ELEVATIONS, HEIGHTS IN FEET				



CHANGES: UPDATE MAG VAR AND TRACK.

TOROX ONE ALFA DEPARTURE
Climb on RWY HDG until leaving 500ft, then turn right to track MKG R-135 to TOROX to join W6.

TOROX ONE BRAVO DEPARTURE
Climb on RWY HDG until leaving 600ft, then turn left HDG 100 to track MKG R-135 to TOROX to join W6.

NOTE
1. Caution close-in obstacles (trees, poles & water tower): 159ft MSL, 794m & 131ft MSL, 292m south of THR02; 77ft MSL, 436m north of THR20.
2. TOROX 1B: ATS surveillance required.